



CAMP CREW 2023

We are excited to announce that we will be offering Camp CREW at two locations this summer, Patton Elementary and Bear Creek Elementary. Both locations will offer all that Camp CREW has to offer including pool days, inflatable water slides, field trips, active games, arts and crafts, team building activities and projects, and a summer packed with friends and FUN!

LOCATIONS

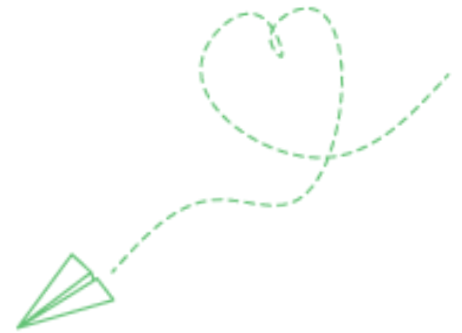
- Patton Elementary, 6001 Westcreek Dr, Austin, TX 78749
- Bear Creek Elementary, 12801 Escarpment Blvd, Austin, TX 78739

CAMP HOURS

- 8:00am - 5:15pm
- **Extended hours Available**
 - 7:30am - 8:00am
 - 5:15pm - 6:00pm

COST & PAYMENTS:

- Weekly Session Cost: \$300
- Extended Mornings: + \$30
- Extended Evenings: + \$45



A \$50 per session non-refundable deposit will be due upon registration. Your deposit will be applied to your total payment due.

The balance for each session will be due as follows:

- Sessions 1-4 (June Sessions) remaining non-refundable balance will be withdrawn on 4/21/2023.
- Sessions 5-9 (July Sessions) remaining non-refundable balance will be withdrawn on 5/26/2023.

Camp CREW registration will be processed using our new Praxischool Parent Portal.

Please follow the instruction below to register:

- Click on link (below) to "Create New User."
- **The School ID is 9792**
- Code will be sent to the email used to create new user. Use code in email to login to account.
- Once logged in choose Camp Registration Form by location, be sure to complete all required fields.
- Once you have filled out the form, you will need to select "shopping cart" and pay the deposit to complete your registration.

CAMP CREW REGISTRATION